

十面埋伏

自由地 威武地

根据琵琶古曲改编

刘文金、赵咏山曲

1【一】列营

Dizi 无膜笛

Musical notation for the first staff, starting with a treble clef and a key signature of one sharp (F#). The time signature is 2/4. The music begins with a whole rest, followed by a half note G4, a quarter note A4, and a quarter note B4. A dynamic marking of *ff* is placed below the first note. The staff ends with a half note G4, a quarter note A4, and a quarter note B4, with a dynamic marking of *mp* and a hairpin decrescendo symbol.

Musical notation for the second staff, starting at measure 10. It begins with a treble clef and a key signature of one sharp. The time signature is 2/4. The music starts with a dynamic marking of *f* and a *rit.* marking. It features a triplet of eighth notes (G4, A4, B4), a quarter note G4, and a quarter note F#4. A trill (tr) is indicated over the quarter note G4. The staff continues with a half note G4, a quarter note A4, and a quarter note B4. A dynamic marking of *f* is placed below the first note. The staff ends with a half note G4, a quarter note A4, and a quarter note B4, with a dynamic marking of *mp* and a hairpin decrescendo symbol.

Musical notation for the third staff, starting at measure 23. It begins with a treble clef and a key signature of one sharp. The time signature is 2/4. The music starts with a dynamic marking of *f* and a *rit.* marking. It features a half note G4, a quarter note A4, and a quarter note B4. A dynamic marking of *f* is placed below the first note. The staff continues with a half note G4, a quarter note A4, and a quarter note B4. A dynamic marking of *mp* and a hairpin decrescendo symbol are placed below the first note. The staff ends with a half note G4, a quarter note A4, and a quarter note B4, with a dynamic marking of *mp* and a hairpin decrescendo symbol.

Musical notation for the fourth staff, starting at measure 36. It begins with a treble clef and a key signature of one sharp. The time signature is 2/4. The music starts with a dynamic marking of *f* and a *rit.* marking. It features a half note G4, a quarter note A4, and a quarter note B4. A dynamic marking of *f* is placed below the first note. The staff continues with a half note G4, a quarter note A4, and a quarter note B4. A dynamic marking of *mp* and a hairpin decrescendo symbol are placed below the first note. The staff ends with a half note G4, a quarter note A4, and a quarter note B4, with a dynamic marking of *mp* and a hairpin decrescendo symbol.

Musical notation for the fifth staff, starting at measure 45. It begins with a treble clef and a key signature of one sharp. The time signature is 2/4. The music starts with a dynamic marking of *f* and a *rit.* marking. It features a half note G4, a quarter note A4, and a quarter note B4. A dynamic marking of *f* is placed below the first note. The staff continues with a half note G4, a quarter note A4, and a quarter note B4. A dynamic marking of *mp* and a hairpin decrescendo symbol are placed below the first note. The staff ends with a half note G4, a quarter note A4, and a quarter note B4, with a dynamic marking of *mp* and a hairpin decrescendo symbol.

Musical notation for the sixth staff, starting at measure 55. It begins with a treble clef and a key signature of one sharp. The time signature is 2/4. The music starts with a dynamic marking of *f* and a *rit.* marking. It features a half note G4, a quarter note A4, and a quarter note B4. A dynamic marking of *f* is placed below the first note. The staff continues with a half note G4, a quarter note A4, and a quarter note B4. A dynamic marking of *mp* and a hairpin decrescendo symbol are placed below the first note. The staff ends with a half note G4, a quarter note A4, and a quarter note B4, with a dynamic marking of *mp* and a hairpin decrescendo symbol.

Musical notation for the seventh staff, starting at measure 72. It begins with a treble clef and a key signature of one sharp. The time signature is 2/4. The music starts with a dynamic marking of *f* and a *rit.* marking. It features a half note G4, a quarter note A4, and a quarter note B4. A dynamic marking of *f* is placed below the first note. The staff continues with a half note G4, a quarter note A4, and a quarter note B4. A dynamic marking of *mp* and a hairpin decrescendo symbol are placed below the first note. The staff ends with a half note G4, a quarter note A4, and a quarter note B4, with a dynamic marking of *mp* and a hairpin decrescendo symbol.

Musical notation for the eighth staff, starting at measure 78. It begins with a treble clef and a key signature of one sharp. The time signature is 2/4. The music starts with a dynamic marking of *f* and a *rit.* marking. It features a half note G4, a quarter note A4, and a quarter note B4. A dynamic marking of *f* is placed below the first note. The staff continues with a half note G4, a quarter note A4, and a quarter note B4. A dynamic marking of *mp* and a hairpin decrescendo symbol are placed below the first note. The staff ends with a half note G4, a quarter note A4, and a quarter note B4, with a dynamic marking of *mp* and a hairpin decrescendo symbol.

Musical notation for the ninth staff, starting at measure 96. It begins with a treble clef and a key signature of one sharp. The time signature is 2/4. The music starts with a dynamic marking of *f* and a *rit.* marking. It features a half note G4, a quarter note A4, and a quarter note B4. A dynamic marking of *f* is placed below the first note. The staff continues with a half note G4, a quarter note A4, and a quarter note B4. A dynamic marking of *mp* and a hairpin decrescendo symbol are placed below the first note. The staff ends with a half note G4, a quarter note A4, and a quarter note B4, with a dynamic marking of *mp* and a hairpin decrescendo symbol.

无膜笛

122 渐快

Musical notation for measure 122, starting with a treble clef and a key signature of one sharp (F#). The melody begins with a quarter rest, followed by a quarter note G4, a quarter note A4, and a quarter note B4. A dynamic marking of *mp* is present. A fermata covers the next two notes, C5 and D5, with a dynamic marking of *mf*. The measure concludes with a quarter note E5, a quarter note D5, and a quarter note C5. A box containing the number 3 is positioned above the staff, and a box containing the number 6 is positioned above the final note.

135

Musical notation for measure 135, starting with a treble clef and a key signature of one sharp (F#). The melody consists of quarter notes G4, A4, B4, and C5. A dynamic marking of *ff* is present. A fermata covers the next two notes, D5 and E5. The measure concludes with a quarter note F#5. Above the staff, the text "rit. 稍慢" is written, followed by a box containing the number 4 and the text "较自由". To the right, the text "渐快 渐急迫" is written. A box containing the number 2 is positioned above the final note.

143

Musical notation for measure 143, starting with a treble clef and a key signature of one sharp (F#). The melody features eighth notes G4, A4, B4, and C5, followed by a quarter note D5. A box containing the number 3 is positioned below the first three eighth notes. A fermata covers the next two notes, E5 and F#5. The measure concludes with a quarter note G5. A box containing the number 3 is positioned below the final note.

147

Musical notation for measure 147, starting with a treble clef and a key signature of one sharp (F#). The melody consists of quarter notes G4, A4, B4, and C5. A dynamic marking of *mf* is present. A fermata covers the next two notes, D5 and E5. The measure concludes with a quarter note F#5. Above the staff, the text "反复三次" is written. A box containing the number 5 and the text "稍慢" is positioned above the staff. To the right, the text "突转快板" is written. A box containing the number 2 is positioned above the final note.

【四】*mf* 小战

152

Musical notation for measure 152, starting with a treble clef and a key signature of one sharp (F#). The melody consists of eighth notes G4, A4, B4, and C5, followed by a quarter note D5. A dynamic marking of *f* is present. A box containing the number 1 and the text "快板" is positioned above the staff. A box containing the number 4 is positioned above the first four eighth notes.

160

Musical notation for measure 160, starting with a treble clef and a key signature of one sharp (F#). The melody consists of eighth notes G4, A4, B4, and C5, followed by a quarter note D5. A dynamic marking of *ff* is present. A box containing the number 2 is positioned above the staff. A box containing the number 3 and the text "中速" is positioned above the staff. A box containing the number 3 is positioned above the first three eighth notes, and a box containing the number 8 is positioned above the next eighth note.

176 【楚歌】

Musical notation for measure 176, starting with a treble clef and a key signature of one sharp (F#). The melody consists of eighth notes G4, A4, B4, and C5, followed by a quarter note D5. A dynamic marking of *ff* is present. A box containing the number 1 and the text "自由" is positioned above the staff. A box containing the number 1 and the text "由慢渐快" is positioned above the staff. A box containing the number 3 and the text "【五】大战" is positioned above the staff. A box containing the number 8 is positioned above the first eighth note, and a box containing the number 3 is positioned above the next eighth note.

189

Musical notation for measure 189, starting with a treble clef and a key signature of one sharp (F#). The melody consists of eighth notes G4, A4, B4, and C5, followed by a quarter note D5. A dynamic marking of *ff* is present. A box containing the number 2 and the text "快板" is positioned above the staff. A box containing the number 3 and the text "rit. 快板" is positioned above the staff. A box containing the number 3 is positioned above the first three eighth notes, and a box containing the number 2 is positioned above the next eighth note.

198

Musical notation for measure 198, starting with a treble clef and a key signature of one sharp (F#). The melody consists of eighth notes G4, A4, B4, and C5, followed by a quarter note D5. A dynamic marking of *ff* is present. A box containing the number 3 is positioned above the staff. A box containing the number 2 is positioned above the first eighth note, and a box containing the number 3 is positioned above the next eighth note. The measure concludes with a trill on the final note, indicated by a wavy line above the note.

无膜笛

207 **4**

210

213 **5** 稍稳、渐慢

217 原速 **6**

225 **7**

232 **8**

239 **9** 快速

249 **10**

257 **1** 【六】乌江 中速稍慢

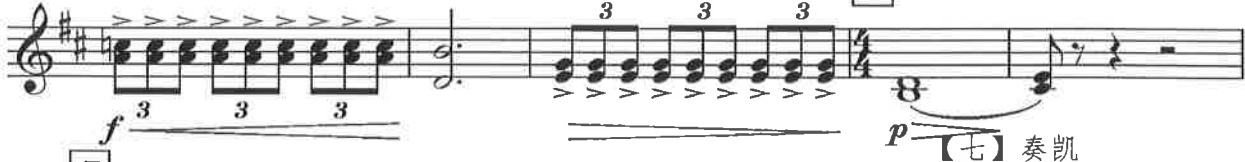
无膜笛

渐快

269



278



283



292



299



304



310



314



321



无膜笛

328 rit. **4** **3**

f

340 **3** **7** a2 *f*

f

348 rit. ♪ = 48 放宽 *f* < *ff*

f < *ff*

359

367 *tr*