

十面埋伏

1 自由地 威武地
【一】列营

根据琵琶古曲改编

刘文金、赵咏山曲

Bass Guen 低管

1 自由地 威武地
【一】列营

根据琵琶古曲改编

刘文金、赵咏山曲

Bass Guen 低管

ff mp

V 2

10 rit. 慢 2 由慢渐快 行板 2 4

f

22 稍稳 3 行板 由慢渐快 2 2

f

32 4 2 4 由慢渐快

45 自由 1【二】吹打 4

f

55 中速 12 2 13 3 13 rit.

95 1【三】埋伏 由慢渐快 小快板 稍渐慢 4 14 2

118 2 稍慢些的小快板渐快 4 2 3 2 mf

f mf

130 5 rit. 稍慢 4 较自由 ff

ff

141 渐快 低管 渐急迫 反复三次 5 稍慢

150 突转快板 1【四】 快板 11 2 8 rit. 2 ff

174 3 中速 【楚歌】 8 1【五】 由慢渐快 3 大战 自由 ff

189 rit. 快板 3 mp 2

195 2 快板 8 3 4 ff

208

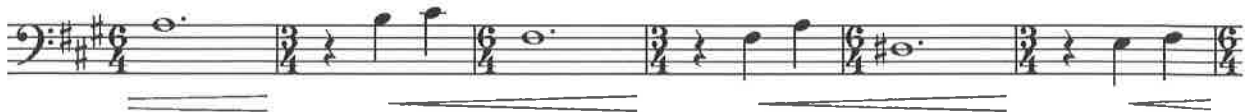
212 5

216 稍稳、渐慢 原速 3 2

223 6 7 mp ff mf

低管

230



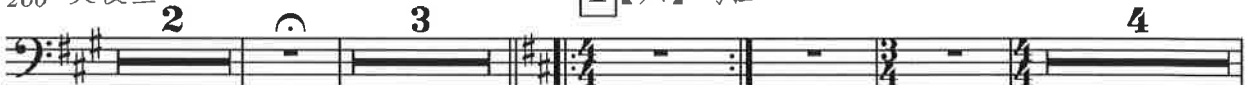
236



246



260



273



284



295



309



316



低音

327

rit. **4** **3**

f

Detailed description: This musical staff shows measure 327. It begins with a bass clef and a key signature of two sharps (F# and C#). The first note is a half note G2. This is followed by a four-measure rest, with the number '4' written above it. The next two notes are quarter notes F#3 and G3, with a fermata over the second. The staff then contains three measures of rests, with the number '3' written above the final measure. The key signature changes to one sharp (F#) for the final two measures, which are quarter notes G3 and F#3.

340

2 **7** *f*

Detailed description: This musical staff shows measure 340. It starts with a bass clef and a key signature of one sharp (F#). The first note is a half note G2, followed by a two-measure rest with the number '2' above it. The next two notes are quarter notes F#3 and G3, with a fermata over the second. The staff then contains a seven-measure rest with the number '7' in a box above it. This is followed by a quarter note G3, a quarter rest, and a quarter note F#3. The final two notes are quarter notes G3 and F#3, with a fermata over the second.

347

rit. **3** **2** ♩ = 48 放宽 *ff*

Detailed description: This musical staff shows measure 347. It begins with a bass clef and a key signature of one sharp (F#). The first note is a quarter note G2, followed by a quarter rest and a quarter note G2. This is followed by a three-measure rest with the number '3' above it. The next two notes are quarter notes F#3 and G3, with a fermata over the second. The staff then contains a two-measure rest with the number '2' above it. The final two notes are quarter notes G3 and F#3, with a fermata over the second. The tempo marking '♩ = 48 放宽' and the dynamic marking '*ff*' are present.

358

Detailed description: This musical staff shows measure 358. It starts with a bass clef and a key signature of one sharp (F#). The first note is a half note G2, followed by a quarter rest. The next two notes are quarter notes F#3 and G3. The staff then contains a half note G3, a quarter rest, and a quarter note G3. The final two notes are quarter notes F#3 and G3.

366

3 **3**

Detailed description: This musical staff shows measure 366. It starts with a bass clef and a key signature of one sharp (F#). The first note is a half note G2, followed by a quarter note F#3. The next two notes are quarter notes G3 and F#3, with a fermata over the second. The staff then contains two triplet eighth notes: G3, F#3, and G3. This is followed by two triplet eighth notes: F#3, G3, and F#3. The final two notes are quarter notes G3 and F#3, with a fermata over the second.